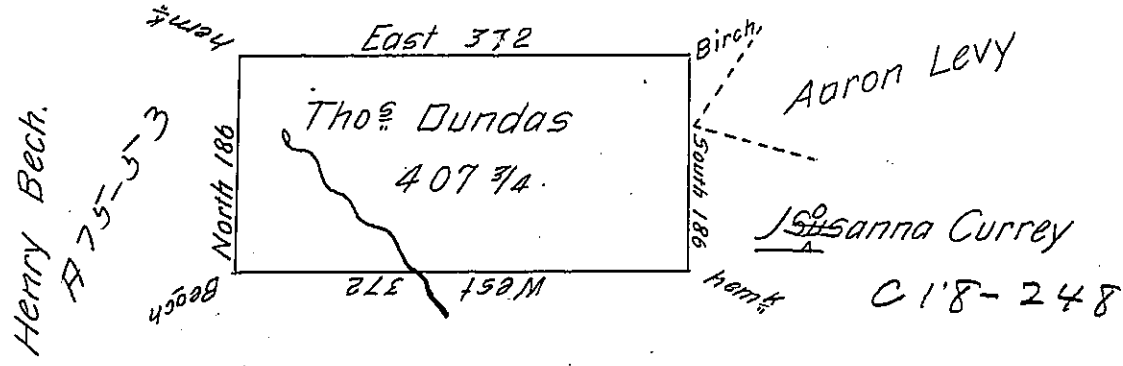


John Graff



James Biddle

C 13-148

Situate on the head Waters of Towandee Creek in Northumb^g or Luzerne County Surveyed the 26th day of Sept^r 1793 to Thomas Dundas on Warrant dated the 22^d Jan^y 1793 Containing Four hundred seven Acres three Quarters and Allowance of Six P Cent for Roads &c.

Jo J Wallis D.S.

Danl Brodhead Esq S.G.

IN TESTIMONY that the above is a copy of the original remaining on file in the Department of Internal Affairs of Pennsylvania, made conformably to an Act of Assembly approved the 16th day of February, 1833, I have hereunto set my Hand and caused the Seal of said Department to be affixed at Harrisburg, this twentyfirst day of July 1904

Joseph R. Brown
Secretary of Internal Affairs.